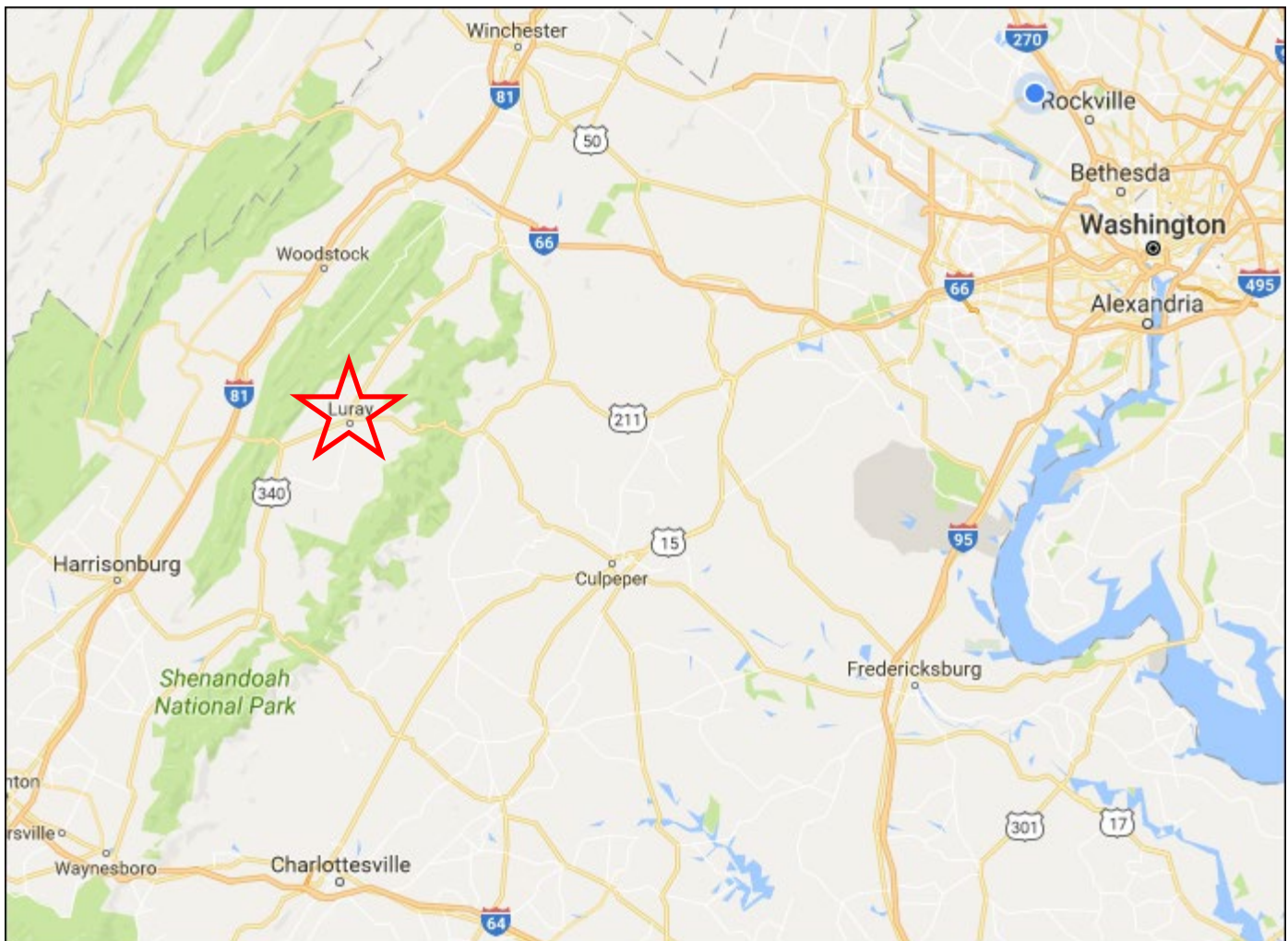


Development Site for Sale Shenandoah Valley, Page County, Town of Luray, Virginia

- 4.8 acres – \$595,000
- Zoned B-1 Business – Townhouses allowed via Special Use Permit
- Located at corner of Memorial Drive & W. Main Street
- Comcast high-speed internet service available at street
- In front of Valley Health / Page Memorial Hospital
- Adjacent to historic [Mimslyn Inn](#)
- One mile from [Luray Caverns](#) which gets 500,000 visitors annually

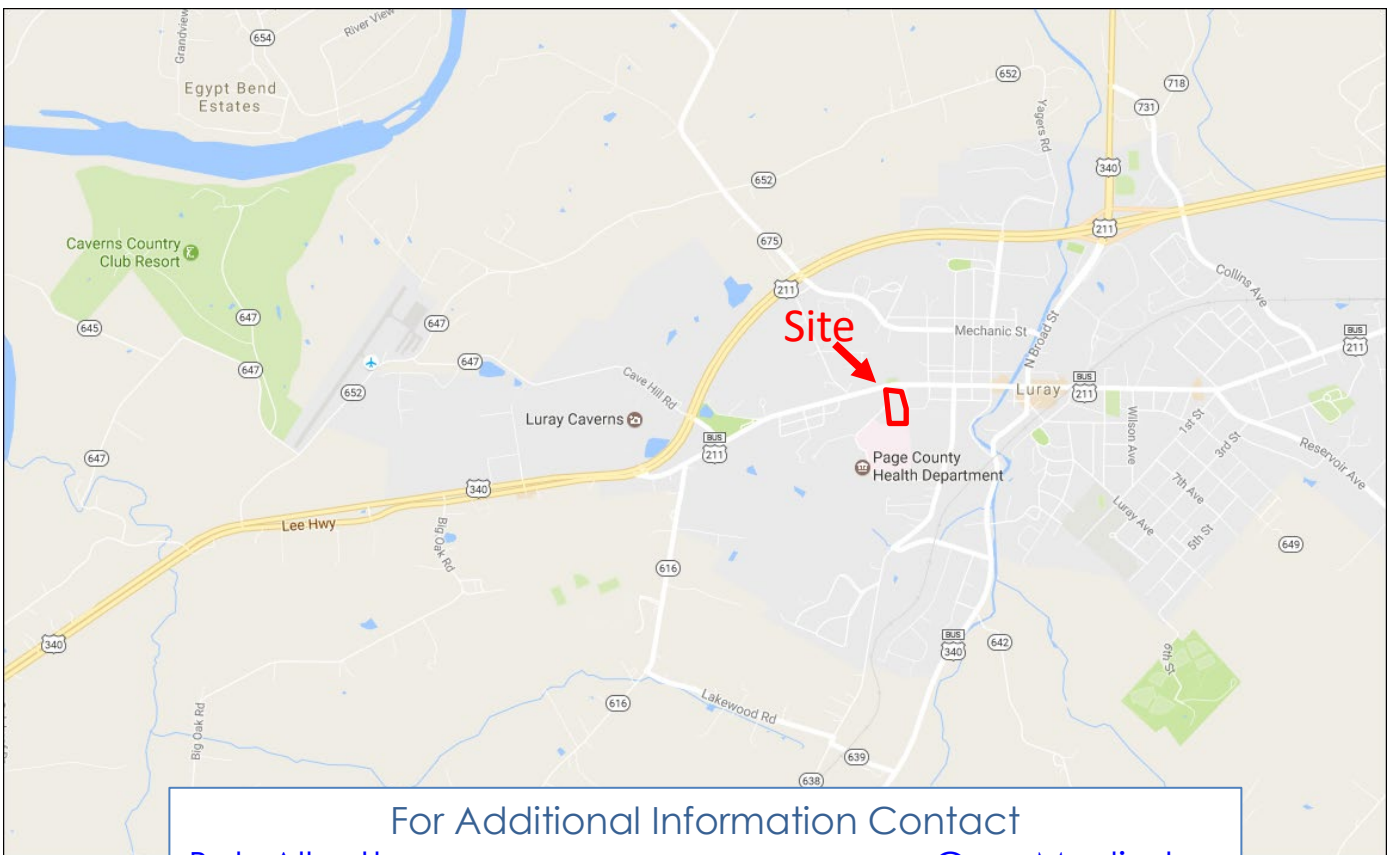


For Additional Information Contact

[Bob Allnutt](#)
(301) 571-8202

[Gary Modjeska](#)
(301) 571-8203

Luray Development Site



For Additional Information Contact

Bob Allnutt (301) 571-8202	Gary Modjeska (301) 571-8203
--	--

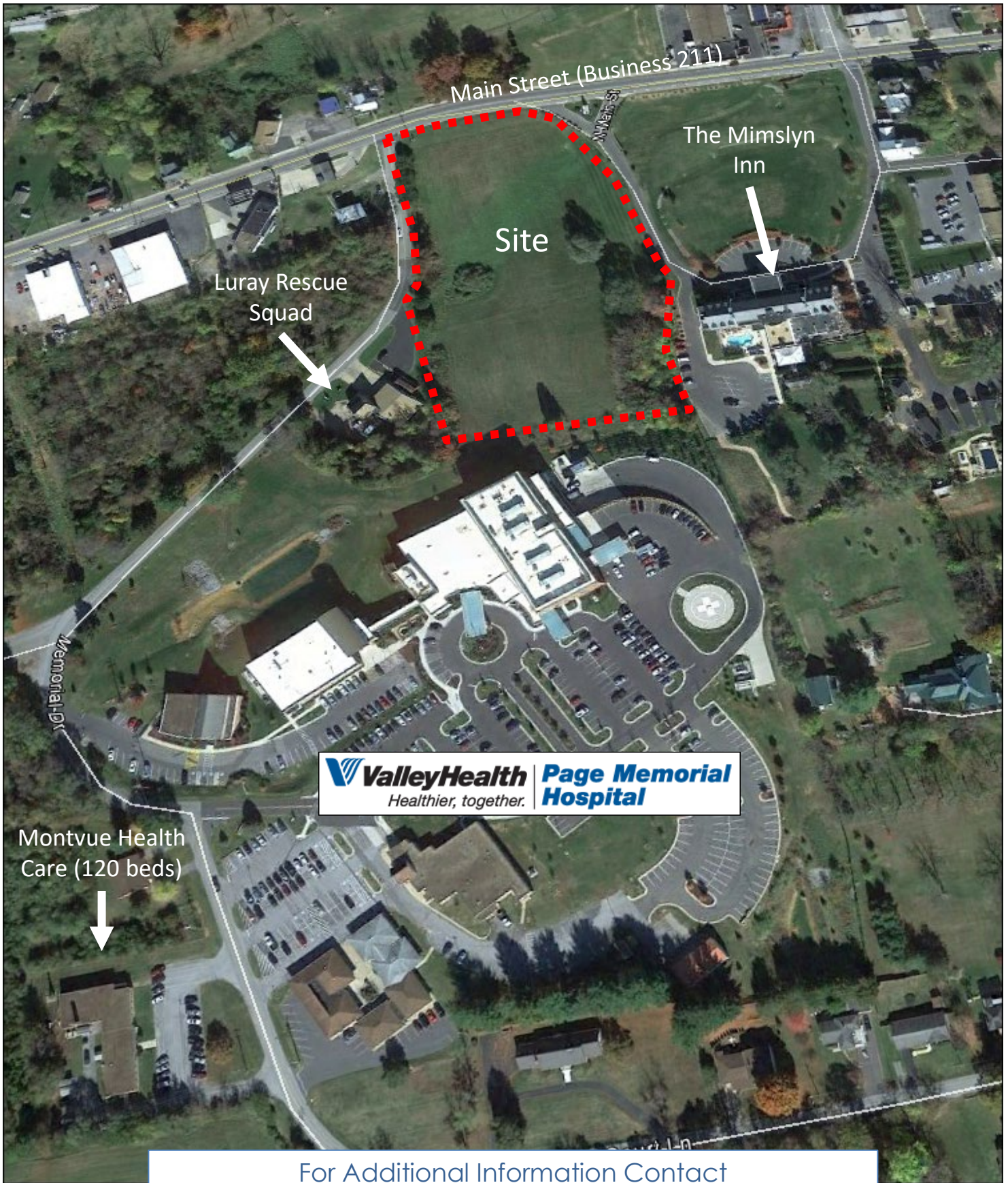
Luray Development Site

W. Main Street & Memorial Drive



For Additional Information Contact

<p>Bob Allnutt (301) 571-8202</p>	<p>Gary Modjeska (301) 571-8203</p>
---	---



For Additional Information Contact

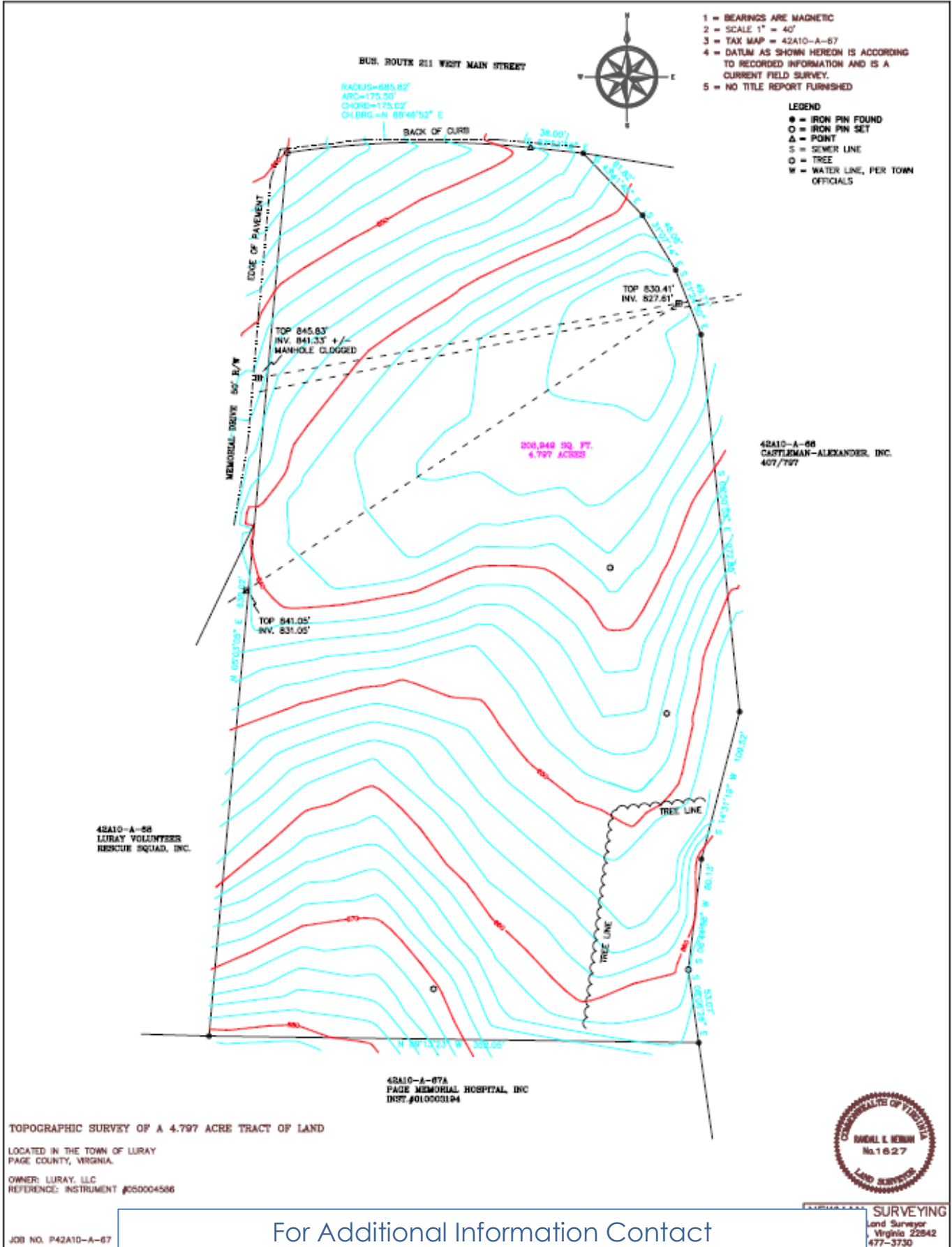
[Bob Allnutt](#)
(301) 571-8202

[Gary Modjeska](#)
(301) 571-8203

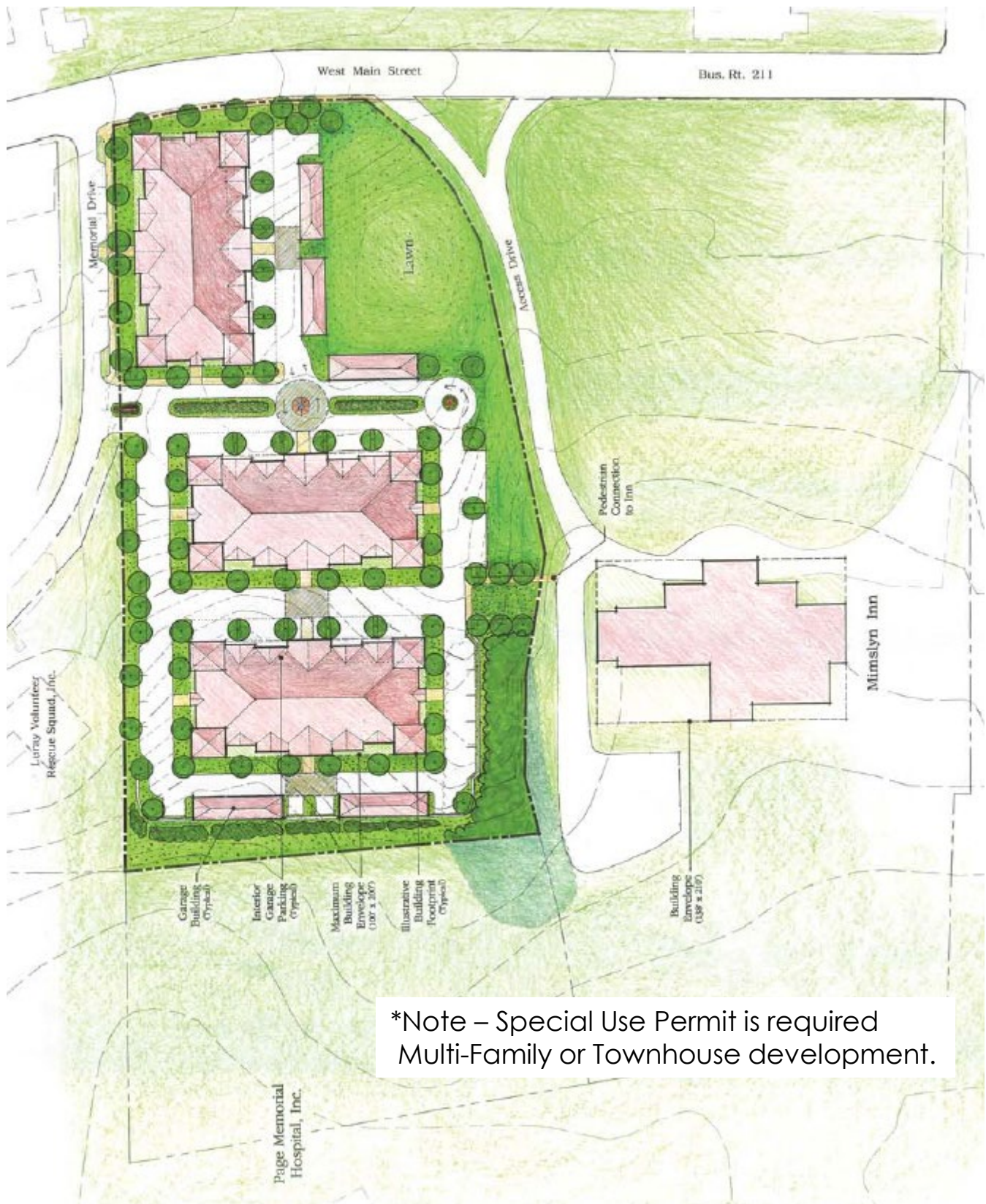
Luray Development Site



For Additional Information Contact
[Bob Allnutt](mailto:Bob.Allnutt@area-properties.com) (301) 571-8202
[Gary Modjeska](mailto:Gary.Modjeska@area-properties.com) (301) 571-8203



Luray Development Site
Multi-Family Concept*



*Note – Special Use Permit is required
Multi-Family or Townhouse development.

For Additional Information Contact

<p>Bob Allnutt (301) 571-8202</p>	<p>Gary Modjeska (301) 571-8203</p>
---	---